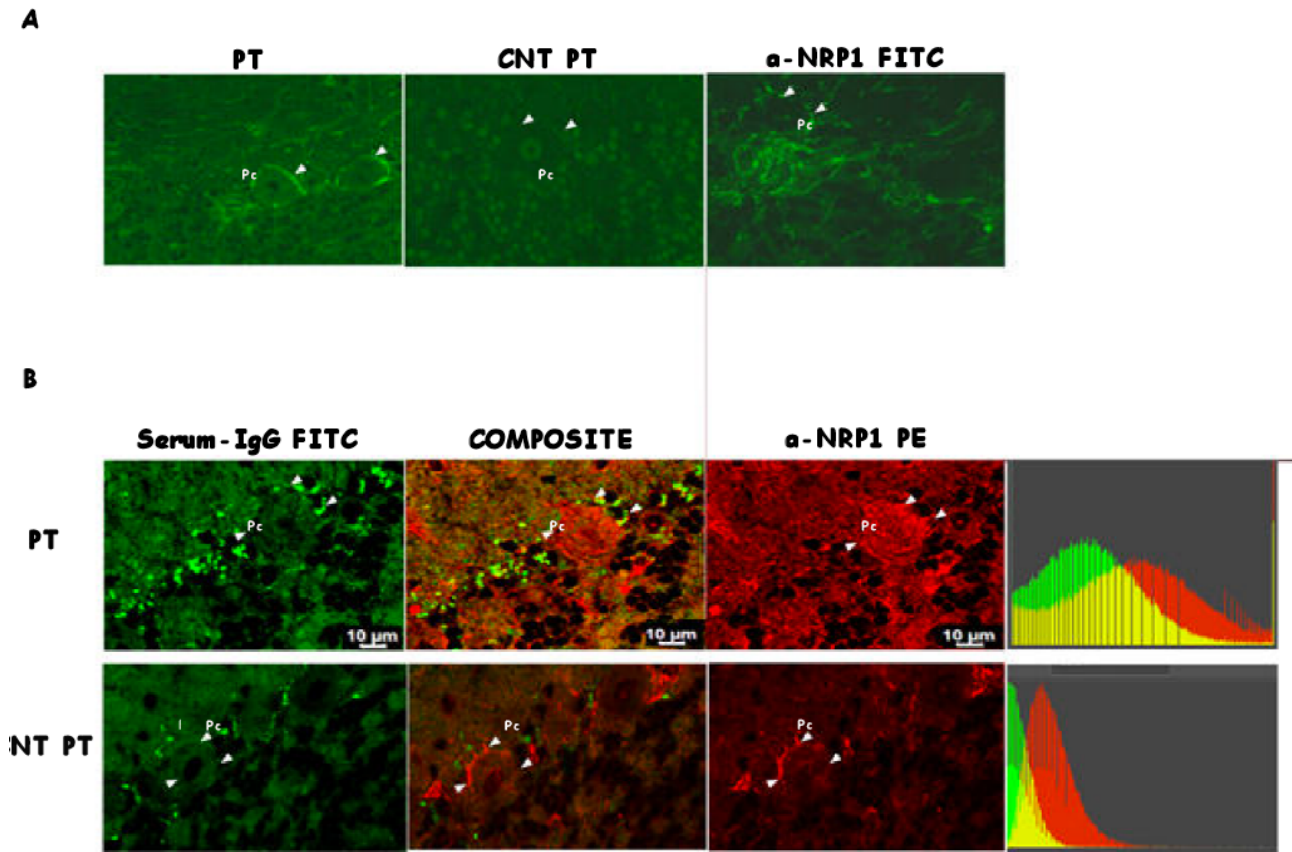


## Suppl. Figure 1

Confocal microscopy identifying NRP-1 binding of serum Ab of PASC-vac patients.

### FIGURE



### Suppl. Figure 1: Study of the presence of serum anti-NRP1 antibodies in PASC patients and in control healthy donors.

Figure...A: Panel A: IFI analysis on primate cerebellum of serum of PASC patients compared to (Panel B) control healthy patients, secondary total IgG FITC conjugated were used; serum dilution 1:10. Panel C: anti-NRP1 PE-conjugated monoclonal antibodies positive control is shown.

Figure...B: Confocal microscopy analysis of anti-NRP1 antibodies presence. Green is shown FITC stained serum of PASC patients total IgG antibodies while in red is shown PE-conjugated monoclonal anti-NRP1 antibodies positive control. Composite panel shown overlay among FITC and PE. Serum dilution 1:10. Images were acquired by Stellaris confocal microscopy (Leica Microsystems). Histograms show degree of overlay of fluorochrome expression for mAb anti-NRP-1 and patient serum.  $R^2=0,53$ ; overlap coefficient 0,944  $p<0,01$  (ImageJ; Fiji).